

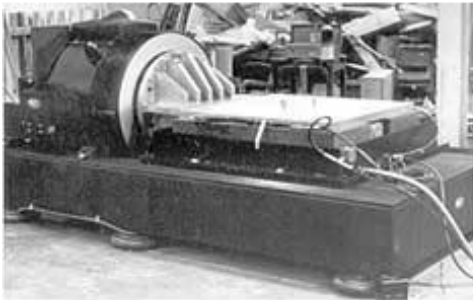
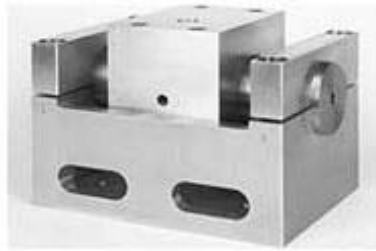


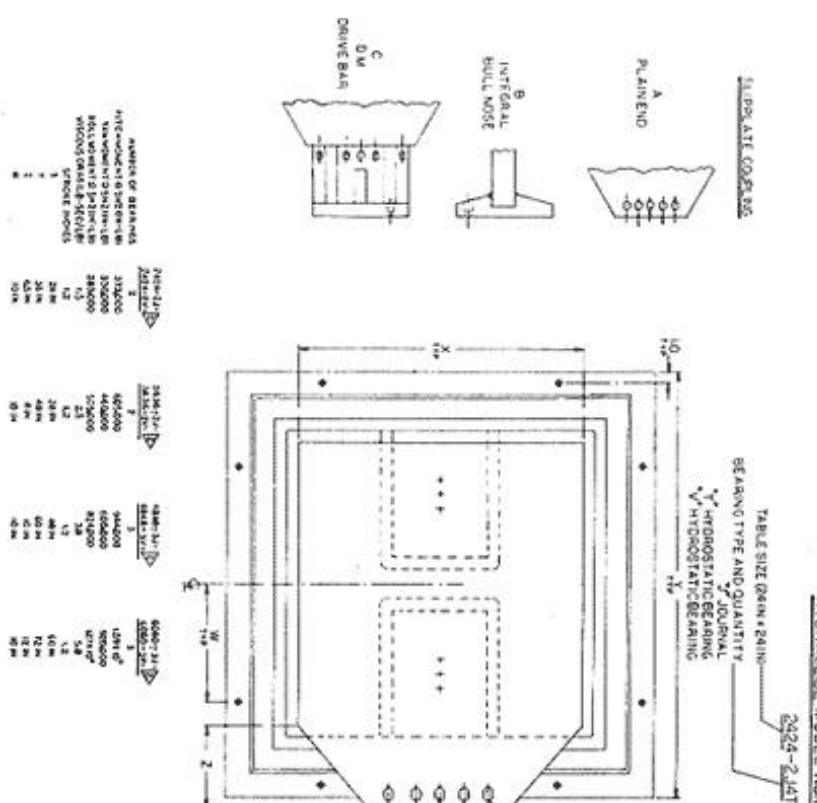
©M/RAD Corporation
71 Pine Steet
Woburn, MA 01801
888-500-9578 • 781-935-5940
Fax: 781-933 -7210
www.mradcorp.com • inquiries@mradcorp.com

Electrodynamic Shaker Peripheral Equipment

Hydraglide Hydrostatic Bearing Sliptable

- Journal Hydrostatic Bearings to control Vertical and Lateral Crosstalk
- Permits testing of heavy payloads with a high center of gravity and off center loads
- Closed loop hydraulic power supply
- Designed for use with any make vibration shaker
- Seismic Mass or Integral Base optional
- Choice of shaker interface couplings
- 1.2 inch stroke standard, 2.5 inch stroke available
- Special sizes available upon request





NOTES: 1. UNID BASE TO SUPPORT AND ALIGN SUPPLIES TO SHAKERS.
 2. RESIN BASE WITH AIR ISOLATION AT 0.5 IN. 12.5 IN. NATURAL FREQUENCY.
 3. HYDRAULIC POWER SUPPLY 7.5 GPM @ 3000 PSI
 OIL: ISO SSV 1000P

REV	DATE	DESCRIPTION
1	10/1/80	ISSUE FOR PRODUCTION
2	10/1/80	ISSUE FOR PRODUCTION
3	10/1/80	ISSUE FOR PRODUCTION
4	10/1/80	ISSUE FOR PRODUCTION
5	10/1/80	ISSUE FOR PRODUCTION
6	10/1/80	ISSUE FOR PRODUCTION
7	10/1/80	ISSUE FOR PRODUCTION
8	10/1/80	ISSUE FOR PRODUCTION
9	10/1/80	ISSUE FOR PRODUCTION
10	10/1/80	ISSUE FOR PRODUCTION
11	10/1/80	ISSUE FOR PRODUCTION
12	10/1/80	ISSUE FOR PRODUCTION
13	10/1/80	ISSUE FOR PRODUCTION
14	10/1/80	ISSUE FOR PRODUCTION
15	10/1/80	ISSUE FOR PRODUCTION
16	10/1/80	ISSUE FOR PRODUCTION
17	10/1/80	ISSUE FOR PRODUCTION
18	10/1/80	ISSUE FOR PRODUCTION
19	10/1/80	ISSUE FOR PRODUCTION
20	10/1/80	ISSUE FOR PRODUCTION
21	10/1/80	ISSUE FOR PRODUCTION
22	10/1/80	ISSUE FOR PRODUCTION
23	10/1/80	ISSUE FOR PRODUCTION
24	10/1/80	ISSUE FOR PRODUCTION
25	10/1/80	ISSUE FOR PRODUCTION
26	10/1/80	ISSUE FOR PRODUCTION
27	10/1/80	ISSUE FOR PRODUCTION
28	10/1/80	ISSUE FOR PRODUCTION
29	10/1/80	ISSUE FOR PRODUCTION
30	10/1/80	ISSUE FOR PRODUCTION
31	10/1/80	ISSUE FOR PRODUCTION
32	10/1/80	ISSUE FOR PRODUCTION
33	10/1/80	ISSUE FOR PRODUCTION
34	10/1/80	ISSUE FOR PRODUCTION
35	10/1/80	ISSUE FOR PRODUCTION
36	10/1/80	ISSUE FOR PRODUCTION
37	10/1/80	ISSUE FOR PRODUCTION
38	10/1/80	ISSUE FOR PRODUCTION
39	10/1/80	ISSUE FOR PRODUCTION
40	10/1/80	ISSUE FOR PRODUCTION
41	10/1/80	ISSUE FOR PRODUCTION
42	10/1/80	ISSUE FOR PRODUCTION
43	10/1/80	ISSUE FOR PRODUCTION
44	10/1/80	ISSUE FOR PRODUCTION
45	10/1/80	ISSUE FOR PRODUCTION
46	10/1/80	ISSUE FOR PRODUCTION
47	10/1/80	ISSUE FOR PRODUCTION
48	10/1/80	ISSUE FOR PRODUCTION
49	10/1/80	ISSUE FOR PRODUCTION
50	10/1/80	ISSUE FOR PRODUCTION
51	10/1/80	ISSUE FOR PRODUCTION
52	10/1/80	ISSUE FOR PRODUCTION
53	10/1/80	ISSUE FOR PRODUCTION
54	10/1/80	ISSUE FOR PRODUCTION
55	10/1/80	ISSUE FOR PRODUCTION
56	10/1/80	ISSUE FOR PRODUCTION
57	10/1/80	ISSUE FOR PRODUCTION
58	10/1/80	ISSUE FOR PRODUCTION
59	10/1/80	ISSUE FOR PRODUCTION
60	10/1/80	ISSUE FOR PRODUCTION
61	10/1/80	ISSUE FOR PRODUCTION
62	10/1/80	ISSUE FOR PRODUCTION
63	10/1/80	ISSUE FOR PRODUCTION
64	10/1/80	ISSUE FOR PRODUCTION
65	10/1/80	ISSUE FOR PRODUCTION
66	10/1/80	ISSUE FOR PRODUCTION
67	10/1/80	ISSUE FOR PRODUCTION
68	10/1/80	ISSUE FOR PRODUCTION
69	10/1/80	ISSUE FOR PRODUCTION
70	10/1/80	ISSUE FOR PRODUCTION
71	10/1/80	ISSUE FOR PRODUCTION
72	10/1/80	ISSUE FOR PRODUCTION
73	10/1/80	ISSUE FOR PRODUCTION
74	10/1/80	ISSUE FOR PRODUCTION
75	10/1/80	ISSUE FOR PRODUCTION
76	10/1/80	ISSUE FOR PRODUCTION
77	10/1/80	ISSUE FOR PRODUCTION
78	10/1/80	ISSUE FOR PRODUCTION
79	10/1/80	ISSUE FOR PRODUCTION
80	10/1/80	ISSUE FOR PRODUCTION
81	10/1/80	ISSUE FOR PRODUCTION
82	10/1/80	ISSUE FOR PRODUCTION
83	10/1/80	ISSUE FOR PRODUCTION
84	10/1/80	ISSUE FOR PRODUCTION
85	10/1/80	ISSUE FOR PRODUCTION
86	10/1/80	ISSUE FOR PRODUCTION
87	10/1/80	ISSUE FOR PRODUCTION
88	10/1/80	ISSUE FOR PRODUCTION
89	10/1/80	ISSUE FOR PRODUCTION
90	10/1/80	ISSUE FOR PRODUCTION
91	10/1/80	ISSUE FOR PRODUCTION
92	10/1/80	ISSUE FOR PRODUCTION
93	10/1/80	ISSUE FOR PRODUCTION
94	10/1/80	ISSUE FOR PRODUCTION
95	10/1/80	ISSUE FOR PRODUCTION
96	10/1/80	ISSUE FOR PRODUCTION
97	10/1/80	ISSUE FOR PRODUCTION
98	10/1/80	ISSUE FOR PRODUCTION
99	10/1/80	ISSUE FOR PRODUCTION
100	10/1/80	ISSUE FOR PRODUCTION