

SCIENCE galley proofs (1845) are available for download

=====

Dear Sir or Madam:

To expedite publication, we are now sending galley proofs electronically, not by mail. Please download your proofs from the following Web site immediately, and return corrections to SCIENCE within 48 hours.

To download galleys, go to this URL address:

<http://rapidproof.cadmus.com/RapidProof/retrieval/index.jsp>

Login: [your e-mail address]

Password: ----

It is often easiest to copy the password from this e-mail message and paste it into the box on the download form.

You will find 1 PDF file that you should download to your computer. The file will contain several pieces of information:

- 1) A cover letter
- 2) A reprint order form
- 3) The galley proofs of your manuscript

You will need to have Adobe Acrobat Reader software to read this file. This is free software and is available for user downloading at <http://www.adobe.com/products/acrobat/readstep.html>.

Please follow the instructions on the first page of this PDF file, and return the corrected galleys directly to the SCIENCE copyeditor of your paper (not to me) within 48 hours.

If you have any problems or questions in regard to accessing your files, please contact me and please include your manuscript number with all correspondence. If you have questions about the copyediting or making corrections on your galley proof, please contact the SCIENCE copyeditor directly.

Sincerely,

Leslie Richardson
Account Manager, Science
Cadmus Professional Communications
DPS Richmond
Tel: 804-261-3098
Fax: 804-264-2096
e-mail: richardsonl@cadmus.com

Instructions for Handling PDF Galley Proofs

Dear Author:

Thank you for publishing in *Science*. The following letter explains how to use our electronic system for transmitting galley proofs, which we use to expedite publication of papers.

This PDF file includes the following:

1. A three-page reprint order form (p. 2).
2. Galley proofs of your paper (starting on p. 5).

A separate PDF file of the copyedited version of your manuscript showing editorial changes has been, or shortly will be, e-mailed to you directly by the copy editor of your paper. Please use this in checking your galley proofs.

In order to make galley corrections:

1. Please **print** the galley proofs (this file).
2. Mark all of your changes clearly on the printed galley proofs (not the edited manuscript). Please keep changes to an absolute minimum. If alterations are excessive, publication of your paper may be delayed and you will be billed for additional typesetting expenses.
3. Respond to all of the copy editor's queries listed at the end of the edited manuscript.
4. Check all equations and tables carefully.
5. Check that any special characters, such as Greek letters, have translated correctly.
6. Make a copy of the corrected galley proofs for yourself.
7. Return the corrected galley proofs to *Science* by express mail or fax (or both) directly to the *Science* copy editor (their contact information appears on the first page of the edited manuscript). You can also e-mail a list of corrections to the copy editor.
8. If you would like to order reprints, return the reprint order form separately to The Sheridan Press at the address noted on the form, not to *Science*.

It is important that you return galley corrections promptly, within 48 hours. Please let your copy editor know immediately if there will be any delay.

If your manuscript contains color figures, they will appear within the PDF galley proofs; however, the colors and resolution may appear different from the final published figures. Our art department will send separate color figure proofs to you.

Note that although your paper currently begins at the top of a page, it may not do so in the printed magazine. Your paper's position will be determined later when the issue is formatted.

Sincerely,

The Editors

Headquarters

1200 New York Avenue, NW, Washington, DC 20005, USA • Telephone: (+1) 202-326-6501 • Fax (+1) 202-289-7562

Europe Office

Bateman House, 82-88 Hills Road, Cambridge CB2 1LQ, UK • Telephone: (+44) 1223-326500 • Fax: (+44) 1223 326501

Published by the American Association for the Advancement of Science



AMERICAN ASSOCIATION FOR THE
ADVANCEMENT OF SCIENCE

Advancing science • Serving society

2003 **Science** Author Reprint and Color Reimbursements

Gail Hallman, Reprint Customer Service Rep
The Sheridan Press, 450 Fame Avenue, Hanover, PA 17331
(800) 635-7181, (717) 632-3535, or fax (717) 633-8929 ghallman@tsp.sheridan.com

Publication Fees/Author Color Reimbursement for Use of Color in Science

As stated in Information for Contributors and your acceptance letter, authors requesting the use of color are required to pay \$650 for the first color figure and \$450 for each additional figure to help defray costs related to publishing color in the *Science* issue. **Please remember that these charges are not related to your reprint order**, but may be billed together on a single invoice. Authors of solicited Reviews, Viewpoints, and Special Issue Reviews are exempt from these charges.

Reprints

Ordering Information

Author reprints must be used solely for the author's personal use. If commercial or for-profit use is intended, please contact Medical Reprint Services at (800) 482-7414.

To obtain the lowest rates, include in your order any reprints desired by co-authors. **Only one invoice will be issued for group orders to multiple locations.** If co-authors wish to order separately and pay separately at regular rates, ask The Sheridan Press for additional order forms.

Prepayment or signed institution purchase order is required to process your order. You may use the reverse of this form as a proforma invoice. Please return your order form, purchase order, and payment two weeks prior to publication to:

The Sheridan Press
450 Fame Avenue, Hanover, PA 17331

Delivery

Your order will be shipped within 3 weeks of the *Science* issue date. Allow extra time for delivery. UPS ground postage and handling are included in the prices (1-5 day delivery). Orders shipped to authors outside the continental US are mailed via an expedited air service. Please add air shipping charge from table. Orders for articles over one year past publication will require additional time to produce.

Corrections

If a serious error occurs in the published version of the paper, the error can be corrected in reprints if the editorial office is notified promptly. Please contact the editor or copy editor of your paper with the corrections.

Reprint Order Specifications

All reprints will include either a title page or the cover of *Science* from the issue in which your article appears. If you want the cover of *Science*, there will be a \$100 additional fee and you must purchase color reprints. Use the table below to estimate the number of pages required for your reprint order.

Count of Galley Proofs	Title or Cover Page (required)	Estimated Reprint Pages
2-3	1	4
4-7	1	8
8-11	1	12
12-15	1	16

Pricing

Reprint pricing is shown in the following tables. Orders are limited to 1,000 copies per author. To convert color articles to black & white reprints, add \$100 for each color figure to be converted. For articles over twelve months past publication, please contact The Sheridan Press for pricing.

Black and White Reprints

Quantity	100	200	300	400	500	600	700	800	900	1000
4 page	245	252	260	268	285	301	317	333	349	368
8 page	378	396	415	433	464	494	531	558	590	620
12 page	498	534	566	598	650	694	742	788	836	889
16 page	618	667	713	761	825	889	958	1020	1084	1151

Color Reprints

Quantity	100	200	300	400	500	600	700	800	900	1000
4 page	1719	1728	1736	1743	1756	1766	1776	1786	1796	1805
8 page	1967	1999	2032	2055	2093	2124	2159	2186	2215	2243
12 page	2558	2589	2618	2638	2678	2703	2730	2757	2783	2813
16 page	2570	2614	2657	2692	2742	2782	2826	2865	2902	2941

Air Shipping Charges

(for orders outside the continental US)

Quantity	100	200	300	400	500	600	700	800	900	1000
4 page	40	45	50	55	65	70	80	90	100	110
8 page	45	50	70	90	110	130	155	175	195	215
12 page	50	70	100	130	165	195	220	250	285	300
16 page	55	9	130	170	215	250	300	340	380	420

**Authors of Research Articles, Reports, Brevia, and Technical Comments, use Form A.
Authors of Reviews, Viewpoints, and Special Issue Reviews, use Form B (scroll down).**

SCIENCE'S AUTHOR REPRINTS - ORDER FORM / PROFORMA INVOICE

A

Author _____

Title _____

Issue date of SCIENCE _____ Page(s) _____

Please check one:

<input type="checkbox"/>	Research Article	<input type="checkbox"/>	Technical Comment
<input type="checkbox"/>	Report	<input type="checkbox"/>	
<input type="checkbox"/>	Brevia	<input type="checkbox"/>	Other: _____

Publication fees for use of color in article

Publication fees will be invoiced, even if reprints are not ordered.

Number of color figures in article: _____

1. Charges for color usage (\$650 for 1st color figure, \$450 for each additional color figure(s)): \$ _____

Reprints Costs

Is there color in your paper? **Yes / No** (please circle) Do you want color in your reprints? **Yes / No** (please circle)

Count of pages in article _____

Cover page (required): _____

Total pages in reprint _____

Number of copies ordered _____

+1

Reprint production charge (See reprint price table above)

\$ _____

Misc. charges:

Convert Color to Black and White (\$100 per color figure)

\$ _____

Science Issue Cover (\$100)

\$ _____

Outside continental U.S., please add air shipping charge:

\$ _____

2. Total Reprint Charges: \$ _____

Total Reprint Charges & Publication Fees (1 + 2): \$ _____

Billing and Shipping Instructions

Street address must be provided for reprint orders; P.O. box numbers are not acceptable for billing and shipping address.

Send reprints to: _____

Street address _____

City _____ State _____ Zip Code _____

Phone # _____ Fax # _____

Additional shipping location (Attach additional instruction sheet as necessary.)

Quantity _____ Send reprints to: _____

Street address _____

City _____ State _____ Zip Code _____

Phone # _____ Fax # _____

Bill to: _____

Street address _____

City _____ State _____ Zip Code _____

Phone # _____ Fax # _____

Payment Method (please check payment method enclosed)

☐ Personal check (checks must be paid in U.S. dollars and drawn on a U.S. bank, payable to The Sheridan Press)☐ Institution purchase order # _____☐ MC / VISA / American Express (Please circle) Number _____ Exp date _____

Signature: _____ Date: _____

Signature is required for all payment methods. Reprint order will not be processed without signature!

By signing this form, the requestor agrees to accept the responsibility for the payment of reprints.

FORM B: For Authors of Solicited Reviews, Viewpoints and Special Issue Reviews

SCIENCE'S AUTHOR REPRINTS - ORDER FORM / PROFORMA INVOICE

B

Waiver of publication fees

< Must have prior approval from Editorial Office for waiver of Publication Fees. >

Author _____
 Title _____
 Issue date of SCIENCE _____ Page(s) _____
 Please check one:

<input type="checkbox"/>	Review
<input type="checkbox"/>	Viewpoint
<input type="checkbox"/>	Special Issue Review

<input type="checkbox"/>	Other: _____
--------------------------	--------------

Reprints Costs

Is there color in your paper? **Yes / No** (please circle) Do you want color in your reprints? **Yes / No** (please circle)

Count of pages in article	<input type="text"/>
Cover page (required):	+1
Total pages in reprint	<input type="text"/>
Number of copies ordered	<input type="text"/>

Reprint production charge (See reprint price table above)	\$ _____
Misc. charges: Convert Color to Black and White (\$100 per color figure)	\$ _____
Science Issue Cover (\$100)	\$ _____
Outside continental U.S., please add air shipping charge:	\$ _____
Total Reprint Charges:	\$ _____

Billing and Shipping Instructions

Street address must be provided for reprint orders; P.O. box numbers are not acceptable for billing and shipping address.

Send reprints to: _____
 Street address _____
 City _____ State _____ Zip Code _____
 Phone # _____ Fax # _____

Additional shipping location (Attach additional instruction sheet as necessary.)
 Quantity _____ Send reprints to: _____
 Street address _____
 City _____ State _____ Zip Code _____
 Phone # _____ Fax # _____

Bill to: _____
 Street address _____
 City _____ State _____ Zip Code _____
 Phone # _____ Fax # _____

Payment Method (please check payment method enclosed)

<input type="checkbox"/>	Personal check (checks must be paid in U.S. dollars and drawn on a U.S. bank, payable to The Sheridan Press)
<input type="checkbox"/>	Institution purchase order # _____
<input type="checkbox"/>	MC / VISA / American Express (Please circle) Number _____ Exp date _____

Signature: _____ **Date:** _____

Signature is required for **all** payment methods. **Reprint order will not be processed without signature!**
 By signing this form, the requestor agrees to accept the responsibility for the payment of reprints.

Glycosylation Restores Survival of Chilled Blood Platelets

Karin M. Hoffmeister,^{1*} Emma C. Josefsson,^{1,2} Natasha A. Isaac,¹ Henrik Clausen,^{3,4} John H. Hartwig,¹ Thomas P. Stossel¹

Cooling of blood platelets clusters the von Willebrand factor receptor complex. Macrophage $\alpha_M\beta_2$ integrins bind to the GPIb α subunit of the clustered complex, resulting in rapid clearance of transfused, cooled platelets. This precludes refrigeration of platelets for transfusion, but the current practice of room temperature storage has major drawbacks. We document that $\alpha_M\beta_2$ is a lectin that recognizes exposed β -N-acetylglucosamine residues of N-linked glycans on GPIb α . Enzymatic galactosylation of chilled platelets blocks $\alpha_M\beta_2$ recognition, prolonging the circulation of functional cooled platelets. Platelet-associated galactosyltransferase produces efficient galactosylation when uridine diphosphate–galactose is added, affording a potentially simple method for storing platelets in the cold.

In 2001, blood centers performed over 12 million phlebotomies to procure platelets for transfusion into platelet-deficient patients at risk for bleeding. The fact that refrigerated platelets do not circulate after transfusion and therefore require room temperature storage complicates this potentially life-saving procedure. Platelets stored at room temperature lose hemostatic function, as assessed by in vitro assays. Room-temperature storage also accommodates bacterial growth, and bacterial sepsis is currently the major risk factor for transfusion-transmitted disease. The risk of bacterial infections transmitted through platelet concentrate transfusion is estimated to be 50 times higher than that of refrigerated red blood cell products (1, 2). Thus, regulatory agencies limit platelet storage to 5 days, and this short shelf life severely compromises platelet inventories, creating chronic shortages (3, 4).

We recently defined the clearance mechanism of chilled platelets (5). Cooling irreversibly reorganizes the von Willebrand factor receptor [the (GPIb α IX)₂V complex] into clusters on the platelet surface. The integrin receptor $\alpha_M\beta_2$, (complement receptor type 3/Mac-1) of hepatic macrophages recognizes clustered GPIb α , and the macrophages ingest the platelets. However, refrigerated and rewarmed platelets do not clear rapidly

from the circulation of mice lacking $\alpha_M\beta_2$ receptors. The circulating platelets are not activated, and they function normally in response to injury in vivo. In addition, the binding of activated von Willebrand factor to the GPIb complex of warm or cold platelets

in vitro is indistinguishable. Therefore, we suggested that the hemostatic and cold-induced clearance functions of the GPIb complex are separable and that modification of the latter might accommodate storage of platelets in cold without impairment of platelet function. Here, we provide evidence that $\alpha_M\beta_2$ recognizes GPIb α on cooled platelets through a lectin-mediated interaction with exposed β -N-acetylglucosamine (β -GlcNAc) residues on N-linked oligosaccharides. We demonstrate that this interaction between GPIb α and macrophages can be blocked by galactosylation of exposed β -GlcNAc residues, such that glycan-modified platelets circulate even better after cooling than room temperature platelets. We also discovered that sufficient galactosyl transferase activity is associated with platelets such that GPIb α can be modified by simple incubation in the presence of the donor substrate UDP-galactose (UDP-Gal).

The I domain of $\alpha_M\beta_2$ binds to platelet GPIb α (6), but $\alpha_M\beta_2$ also contains a lectin domain implicated in innate immunity with specificity for β -glucans (7). Rabbit erythrocytes bind to neutrophil $\alpha_M\beta_2$ via its lectin

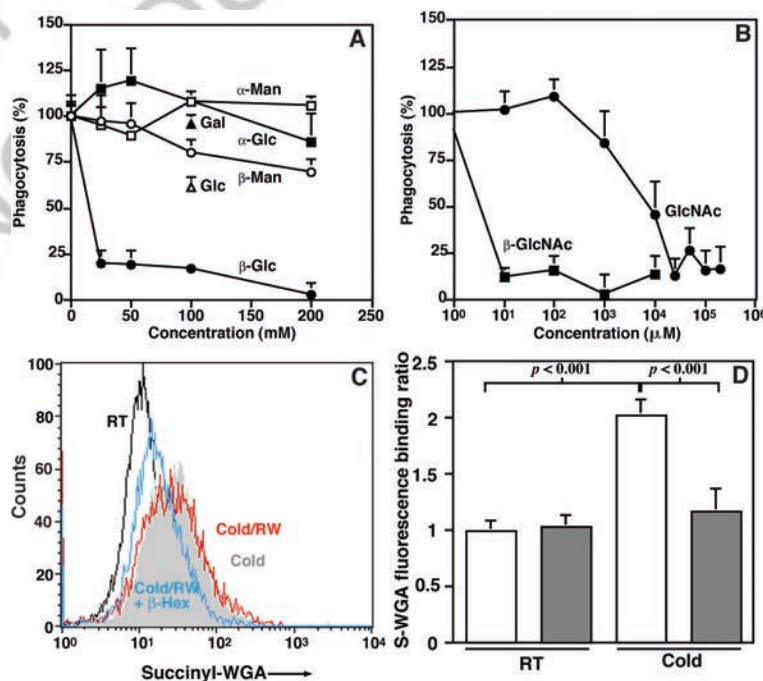


Fig. 1. Identification of β -GlcNAc as the lectin target for $\alpha_M\beta_2$. (A and B) Effect of monosaccharides on the ingestion of chilled platelets by THP-1 cells. D-Glucose (Glc), D-Galactose (Gal), methyl- α / β -mannoside (α / β -Man), methyl- α / β -glucoside (α / β -Glc), N-acetyl D-Glucosamine (GlcNAc) or β -GlcNAc were added at the indicated concentrations. The extent of chilled platelets ingestion without the added monosaccharides was defined as 100%. Each point represents the mean \pm SD of five to six experiments in triplicate. (C and D). Effects of temperature and β -hexosaminidase (β -Hex) on binding of S-WGA to platelets. The results shown in the fluorescence-activated cell sorter (FACS) tracing in (C) are representative of six or more experiments. Bars in (D) depict means \pm SD of four separate experiments. Open bars, non-treated room temperature (RT) or chilled (Cold) platelets; solid bars, β -Hex-treated platelets.

¹Division of Hematology, Department of Medicine, Brigham and Women's Hospital, Harvard Medical School, Boston, MA 02115, USA. ²Department of Rheumatology and Inflammation research, University of Gothenburg, Gothenburg, Sweden. ³Department of Oral Diagnostics, University of Copenhagen, School of Dentistry, Copenhagen, Denmark. ⁴Zymequest, Inc., Beverly, MA XXXXX, USA.

*To whom correspondence should be addressed. E-mail: khoffmeister@rics.bwh.harvard.edu

REPORTS

domain-triggering ingestion (8, 9). We hypothesized that the clearance of chilled platelets could involve a similar mechanism. Therefore, we looked for inhibitory effects of monosaccharides on the phagocytosis of chilled platelets by differentiated THP-1 cells expressing $\alpha_M\beta_2$. D-glucose, methyl- β -D-glucose but not methyl- α -D-glucose or -galactose, and methyl- α - β -D-mannose inhibit phagocytosis of chilled platelets, implying that the β -glucan recognizing lectin of the $\alpha_M\beta_2$ integrin interacts with chilled platelets (Fig. 1A). High concentrations of N-acetyl-D-glucosamine are also inhibitory; 10 μ M β -N-acetyl-D-glucosamine (β -GlcNAc) efficiently blocks phagocytosis (Fig. 1B). These results suggest that the interaction of the $\alpha_M\beta_2$ integrin with platelets is through lectin-mediated recognition. The effective inhibition by low β -GlcNAc concentrations indicates that the $\alpha_M\beta_2$ -lectin recognizes exposed β -GlcNAc residues on chilled platelets. Thus, partial interference with the platelet $\alpha_M\beta_2$ -lectin interaction might be sufficient to prevent recognition. The monosaccharides tested did not induce platelet aggregation detectable by light scattering or α -granule secretion, as measured by P-selectin up-regulation. They also did not influence aggregation responses or secretion induced by thrombin or ristocetin (data not

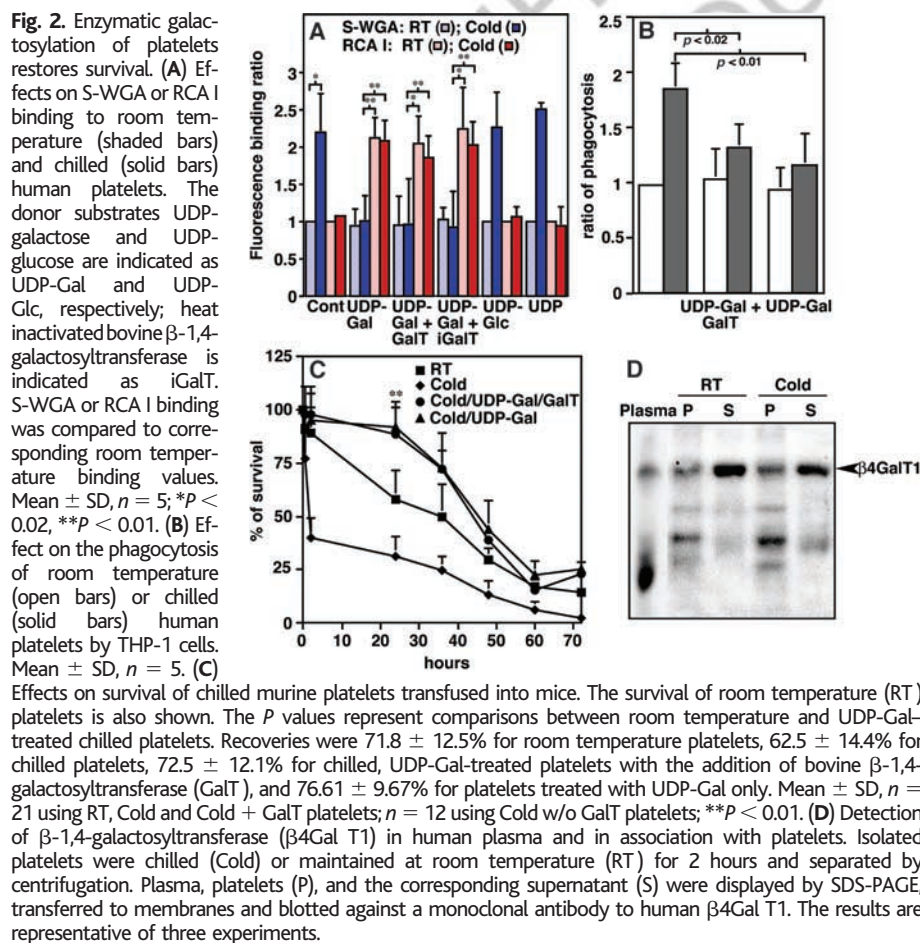
shown). Sialic acid and galactose residues cover β -GlcNAc residues on most cell surface glycans including platelets (10–12), but our experiments indicate that macrophage $\alpha_M\beta_2$ recognizes oligosaccharides, presumably with exposed β -GlcNAc residues on GPIIb α on the chilled platelet surface.

We used a panel of lectins with known specificities to identify further the carbohydrate ligands recognized on chilled platelets. Chilling induces a twofold increase in the binding to human platelets of succinyl-wheat germ agglutinin (S-WGA), a lectin specific for β -GlcNAc (Fig. 1C). Fluorescein isothiocyanate (FITC)-labeled lectins Ricinus communis I (RCA I), Maackia Amurensis (MAA), or Sambucus Nigra (SNA), specific for β -galactose (β -Gal), 2-3 sialic acid, or 2-6 sialic acid, respectively, showed no differences in binding to chilled or room temperature platelets (data not shown). Binding of these lectins to platelets is consistent with the known presence of glycans containing terminal sialic acids (10–12) and with previous documentation of RCA I binding to platelets (13). The enhanced binding of S-WGA after chilling of platelets cannot be reversed by warming of chilled platelets to 37°C (Fig. 1C). Thus, chilling exposes β -GlcNAc residues, a conclusion further substantiated by

the demonstration that β -hexosaminidase, which hydrolyzes terminal β -GlcNAc as well as β -D-N-acetylgalactosamine (β -GalNAc) residues from oligosaccharides (14), diminishes S-WGA binding to cold platelets equivalent to S-WGA room temperature binding levels. Treatment of room temperature platelets with β -hexosaminidase had no effect on S-WGA binding (Fig. 1C). Although β -hexosaminidase digestion inhibits S-WGA binding to chilled platelets, it does not block the phagocytosis of chilled platelets by THP-1 cells (Fig. 1, C and D). In contrast, THP-1 cells also avidly ingest β -hexosaminidase-treated platelets kept at room temperature (fig. S1), suggesting that the removal of exposed β -GlcNAc residues unmasks underlying mannose residues recognized by phagocytic macrophage mannose receptors (15).

Exposed β -GlcNAc residues should serve as substrate for a β -1,4-galactosyltransferase enzyme that catalyzes the linkage Gal β -1GlcNAc β -R. In support of this prediction, masking of β -GlcNAc residues by enzymatic galactosylation inhibited S-WGA binding to cold platelets, phagocytosis of chilled platelets by THP-1 cells, and the rapid clearance of chilled platelets after transfusion into mice (Fig. 2, A to C). The enzymatic galactosylation, achieved with bovine β -1,4-galactosyltransferase and its donor substrate UDP-Gal, decreases S-WGA binding to chilled human platelets to levels equivalent to room temperature platelets. Conversely, the binding of the galactose-specific RCA I lectin increases by about twofold after galactosylation (Fig. 2A). UDP-glucose and UDP alone had no effect on S-WGA or RCA I binding to chilled or room temperature human platelets.

We found that the enzymatic galactosylation of human and mouse platelets is efficient without addition of exogenous β -1,4-galactosyltransferase (Fig. 2A). Alone, the addition of the donor substrate UDP-Gal reduces S-WGA binding and increases RCA I binding to chilled platelets, inhibits phagocytosis of chilled platelets by THP-1 cells in vitro, and prolongs the circulation of chilled platelets in mice. An explanation for this unexpected finding is that platelets reportedly slowly release endogenous galactosyltransferase activity (16). A least one form of β -1,4-galactosyltransferases, β 4Gal T1, is present in human plasma and in the supernatant fluids of washed platelets and in the supernatant fluids of washed platelets (Fig. 2D). Galactosyltransferases may associate specifically with the platelet surface (17, 18). Alternatively, the activity may be plasma-derived and leak out of the platelet's open canalicular system. In either case, modification of platelet glycans responsible for cold-mediated platelet clearance is possible by simple addition of the sugar-nucleotide donor substrate, UDP-Gal.



Importantly, both chilled and nonchilled platelets show the same increase in RCA I binding after galactosylation, implying that β -GlcNAc residues are exposed on the platelet surface independent of temperature. However, chilling is a requirement for recognition of β -GlcNAc residues by S-WGA and by the $\alpha_M\beta_2$ integrin. We have previously demonstrated that chilling of platelets induces an irreversible clustering of GPIIb/IIIa (5). Generally, lectin binding is of low affinity, and multivalent interactions with high density of carbohydrate ligands increases binding avidity. It is possible that the local densities of exposed β -GlcNAc on the surface of non-chilled platelets are too low for recognition, but cold-induced clustering of GPIIb/IIIa provides the necessary density for binding to

S-WGA or the $\alpha_M\beta_2$ integrin lectin domain. We confirmed by S-WGA and RCA I binding flow cytometry that UDP-Gal transfers galactose onto murine platelets in the presence or absence of added galactosyl transferase (fig. S2), and we documented that chilled, galactosylated murine platelets circulate and initially survive significantly better than untreated room temperature platelets (Fig. 2C). Although the earliest recoveries (<2 min) did not differ between transfused room temperature, chilled, and chilled and galactosylated platelets, galactosylation abolished an initial platelet loss of about 20% consistently observed with room temperature platelets.

Galactosylation of murine and human platelets did not impair their functionality in vitro, as measured by aggregation and P-

selectin exposure induced by collagen related peptide (CRP) or thrombin at concentrations ranging from maximally effective to three orders of magnitude lower (Fig. 3). The aggregation responses of unmodified and galactosylated chilled human platelets to a range of ristocetin concentrations, a test of the interaction between GPIIb/IIIa and activated VWF, were indistinguishable or slightly better. This result is consistent with structural information concerning this interaction (19). The attachment points for N-linked glycans on GPIIb/IIIa are outside the binding pocket for VWF. Moreover, mutant GPIIb/IIIa molecules lacking N-linked glycans bind VWF tightly.

The cold-induced increase in binding of human platelets to $\alpha_M\beta_2$ integrin (5) and to S-WGA occurs rapidly (within minutes). The enhanced binding of S-WGA to chilled platelets remained stable for up to 12 days of refrigerated storage in autologous plasma (Fig. 4A). RCA I binding remained equivalent to room temperature levels under the same conditions (Fig. 4B). Galactosylation doubled the binding of RCA I lectin to platelets and reduced S-WGA binding to baseline room temperature levels. The increase in RCA I and decrease in S-WGA binding were identical whether galactosylation proceeded or followed storage of the platelets in autologous plasma for up to 12 days (Fig. 4, A and B). These results show that galactosylation of platelets to inhibit lectin binding is possible before or after refrigeration and that the glycan modification is stable during storage for up to 12 days. Platelets stored at room temperature rapidly lose responsiveness to aggregating agents; this loss does not occur with refrigeration (20). Accordingly, refrigerated platelets with or without galactosylation, before or after storage, retained aggregation responsiveness to thrombin for up to 12 days of cold storage.

We localized the exposed β -GlcNAc residues mediating $\alpha_M\beta_2$ lectin domain recognition of GPIIb/IIIa N-glycans. The extracellular domain of GPIIb/IIIa contains 60% of total platelet carbohydrate content in the form of N- and O-glycosidically linked carbohydrate chains (12, 21, 22). Binding of peroxidase-labeled WGA to GPIIb/IIIa is easily detectable in displays of total platelet proteins resolved by SDS-polyacrylamide gel electrophoresis (SDS-PAGE), demonstrating that GPIIb/IIIa contains the bulk of the β -GlcNAc residues on platelets, and binding of WGA to GPIIb/IIIa is observable in GPIIb/IIIa immunoprecipitates. UDP-Gal with or without added galactosyltransferase diminishes S-WGA binding to GPIIb/IIIa, whereas RCA I binding to GPIIb/IIIa increases (Fig. 5A). These results show that galactosylation specifically covers exposed β -GlcNAc residues on GPIIb/IIIa. Removal of the N-terminal 282 residues of GPIIb/IIIa from human platelet surfaces using the snake ven-

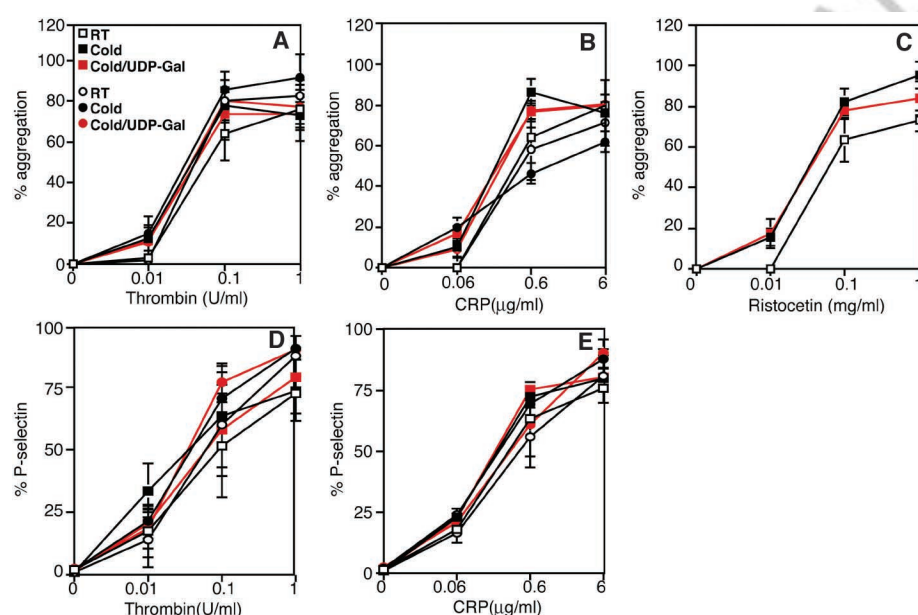


Fig. 3. Galactosylation of murine or human platelets does not impair their functionality. Activated human (squares) or murine (circles) platelets aggregate (A to C) and expose P-selectin (D and E) to the same extent as room temperature-maintained platelets after chilling (Cold) or chilling and enzymatic galactosylation (Cold/UDP-Gal) treatments. The platelets were activated with thrombin or the collagen related peptide (CRP), as indicated. Agglutination was induced by adding ristocetin to human platelet rich plasma.

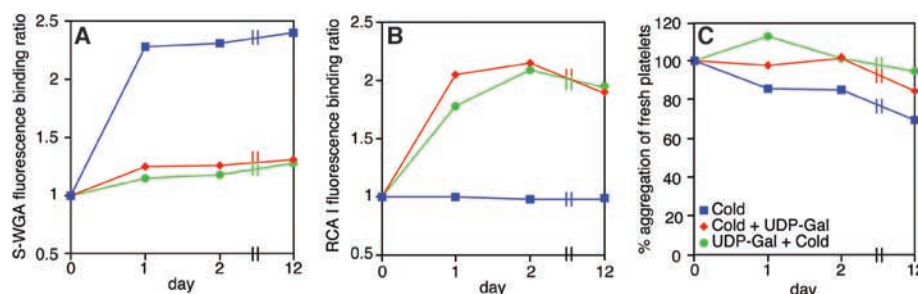


Fig. 4. Galactosylation of human platelets can be accomplished before or after 12 days of storage at 4°C and does not impair platelet function. Platelet rich plasma left untreated (Cold) or platelets galactosylated in plasma before (UDP-Gal + Cold) or after the extended storage for 1, 2, or 12 days (Cold + UDP-Gal) are compared. Galactose transfer to the platelet surface was verified using (A) S-WGA or (B) RCA I binding. (C) Chilled or chilled and galactosylated platelets aggregate in vitro in response to 1 U/ml thrombin after being stored for 12 days at 4°C. The graphs represent the mean values of two independent experiments.

REPORTS

om protease mocarhagin (23), which inhibited phagocytosis of human platelets by THP-1 cells in vitro (5), reduces S-WGA binding to chilled platelets to levels nearly equivalent to S-WGA room temperature binding levels (Fig. 5B). WGA binds predominantly to the N-terminus of GPIb α released by mocarhagin into platelet supernatant fluids as a polypeptide band of 45 kD recognizable by the monoclonal antibody SZ2 specific for that domain (Fig. 5C). The glycans of this domain are N-linked (22). A small portion of GPIb α

remains intact after mocarhagin treatment, possibly because the open canalicular system of the platelet sequesters it. Peroxidase-conjugated WGA weakly recognizes the residual platelet associated GPIb α C-terminus after mocarhagin cleavage, identifiable with monoclonal antibody WM23 (24) (Fig. 5C).

We have shown that the lectin domain of the $\alpha_M\beta_2$ integrin on phagocytic cells recognizes terminal β -GlcNAc residues on platelet GPIb α 's N-linked glycans clustered by chilling and that this recognition results in phagocytosis and clearance of platelets exposed to cold temperatures. We have also demonstrated that enzymatic galactosylation stably masks the exposed platelet GlcNAc residues to inhibit the recognition and clearance mechanism (fig. S3). This inhibition appears anomalous at face value, because the hepatic asialoglycoprotein receptor is a well-characterized mediator of the removal of desialylated proteins with exposed galactose residues (25) and even of proteins with galactose residues covered with sialic acid (26). However, lectin recognition of glycans presumably requires more than the mere presence of a particular target sugar. For example, we investigated the interaction of human polymorphonuclear leukocytes with rabbit erythrocytes known to express abundant surface β -GlcNAc residues. As previously reported (9), we found that 10 mM GlcNAc inhibited phagocytosis of the erythrocytes by the leukocytes; we also observed that 10 μ M β -GlcNAc inhibited this interaction, strongly implicating β -glycans in the recognition mechanism. However, addition of UDP-Gal and bovine β -1,4-galactosyltransferase to rabbit erythrocytes under conditions that modify platelet glycans had no detectable effect on the phagocytosis of the erythrocytes (fig. S4A). Basal S-WGA binding to these cells was an order of magnitude greater than to platelets, suggesting that the high density of β -GlcNAc residues on rabbit erythrocytes leads to recognition and phagocytosis by $\alpha_M\beta_2$ integrin, whereas clustering of a much smaller number of exposed β -GlcNAc residues on chilled platelets leads to their recognition by the phagocyte $\alpha_M\beta_2$ integrin. Consistent with this conclusion, we found that chilling a mixture of human platelets and polymorphonuclear leukocytes with rabbit erythrocytes led to selective binding of the platelets to the leukocytes (fig. S4B). Other evidence in favor of this interpretation: Sialyltransferases ST3Gal-IV and ST6Gal-I can mask galactose residues recognized by the asialoglycoprotein receptor, but only ST3Gal-IV deficiency enhances the clearance of von Willebrand factor and diminishes platelet counts in mice (27). The level of expression of exposed galactose residues on the ST3Gal-IV-deficient platelets, documented by RCA I binding, is an order of magni-

tude greater than we observed after galactose modification of human or murine platelets (27) (fig. S2).

UDP-Gal is a normal constituent of human cells, and micromolar free UDP-Gal concentrations are detectable in body fluids (28). Endogenous galactose production in humans is 2 grams per day (29). Most sialyltransferase-deficient animals have no major phenotypic abnormalities, and we observed no ill effects on infusing 12.5 μ g of UDP-Gal into mice during platelet transfusion experiments that lasted up to a week. Therefore, the simple addition of UDP-Gal to platelets before or after refrigeration is probably safe and offers a compelling strategy to secure the circulation of chilled platelets. If glycan modification safely prolongs the circulation of refrigerated platelets in humans, it could contribute to better control of platelet inventories, diminution of bacterial contamination, and increased ability to provide platelets of improved functional quality to patients needing platelet transfusion.

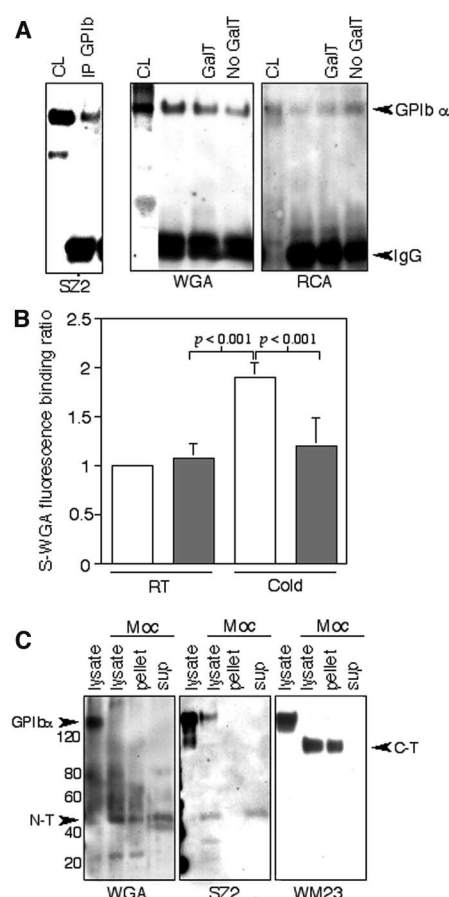


Fig. 5. Evidence that WGA-reactive β -glycans reside on GPIb α . (A) Co-migration of peroxidase-S-WGA and GPIb α -reactive monoclonal antibody SZ2 on SDS-PAGE of human platelet lysates, and immunoprecipitation of WGA-reactive protein by the GPIb α -reactive monoclonal antibody WM23. WGA also reacts with known β -GlcNAc residues on immunoglobulin G (IgG) (30). The results are representative of three experiments. (B) Mocarhagin treatment of platelets eliminates S-WGA binding after chilling. The open bars represent values of untreated platelets; the closed bars represent values mocarhagin-treated platelets. Mean \pm SD, $n = 4$. (C) Peroxidase-labeled WGA recognizes the 45 kD N-terminus of GPIb α . Release of the GPIb α N-terminal by mocarhagin from platelets and detection of the fragment with WGA and with SZ2. The right-hand panel shows detection of the residual C-terminal of GPIb α with WM23. The results are representative of four experiments.

References and Notes

1. M. Kuehnert et al., *Transfusion* **41**, 1493 (2001).
2. M. Blajchman, *Transfus Apheresis Sci.* **24**, 245 (2001).
3. National Blood Data Resource Center, *Executive Summary* (Bethesda, MD, 2001), p. 3.
4. J. McCullough, in *Blood, Principles and Practice of Hematology*, R. Handin, S. Lux, T. Stossel, Eds. (LWW, Philadelphia, PA, ed. 2, 2003), pp. 2011–2068.
5. K. Hoffmeister et al., *Cell* **10**, 87 (2003).
6. D. Simon et al., *J. Exp. Med.* **192**, 193 (2000).
7. B. Thornton, V. Vetvicka, M. Pitman, R. Glodman, G. Ross, *J. Immunol.* **156**, 1235 (1996).
8. J. Vayssie, L. Gattegno, D. Bladier, D. Aminoff, *Proc. Natl. Acad. Sci. U.S.A.* **83**, 1339 (1986).
9. G. Ross, J. Cain, P. Lachmann, *J. Immunol.* **134**, 3307 (1985).
10. S. Korrel et al., *FEBS Lett.* **15**, 321 (1988).
11. T. Tsuji, T. Osawa, *J. Biochem.* **101**, 241 (1987).
12. T. Tsuji et al., *J. Biol. Chem.* **258**, 6335 (1983).
13. F. Rendu, M. Lebre, *Thromb. Res.* **36**, 447 (1984).
14. P. Robbins, K. Overbye, C. Albright, B. Benfield, J. Pero, *Gene* **111**, 69 (1992).
15. P. Stahl, R. Ezekowitz, *Curr. Opin. Immunol.* **10**, 50 (1998).
16. K. Hopper, A. Semler, G. Chapman, R. Davey, *Blood* **68**, 176 (1986).
17. G. Jamieson, C. Urban, A. Barber, *Nature New Biol.* **234**, 5 (1971).
18. A. Barber, G. Jamieson, *Biochim. Biophys. Acta* **252**, 533 (1971).
19. E. Huizinga et al., *Science* **297**, 1176 (2002).
20. G. Becker, M. Tuccelli, T. Kunicki, M. Chalos, R. Aster, *Transfusion* **13**, 61 (1973).
21. M. Berndt et al., *Eur. J. Biochem.* **151**, 637 (1985).
22. J. Lopez et al., *Proc. Natl. Acad. Sci. U.S.A.* **84**, 5615 (1987).
23. C. Ward, R. Andrews, A. Smith, M. Berndt, *Biochemistry* **28**, 8326 (1996).
24. M. Berndt, Y. Shen, S. Doppeide, E. Gardiner, R. Andrews, *Thromb. Haemost.* **86**, 178 (2001).
25. Y. Mi, S. Shapiro, J. Baenziger, *J. Clin. Invest.* **109**, 269 (2002).
26. E. Park, S. Manzella, J. Baenziger, *J. Biol. Chem.* **278**, 4597 (2003).
27. L. Ellies et al., *Proc. Natl. Acad. Sci. U.S.A.* **99**, 10042 (2002).
28. P. Arthur, J. Kent, P. Hartmann, *J. Pediatr. Gastroenterol. Nutr.* **13**, 260 (1991).
29. G. Berry et al., *Lancet* **346**, 1073 (1995).
30. A. Fotinopoulou, T. Meyers, P. Varley, G. Turner, *Biotechnol. Appl. Biochem.* **37**, 1 (2003).
31. Supported by grants from the NIH (HL19429,

HL56949) and from the Edwin S. Webster and Ellison Foundations. T.P.S. is an American Cancer Society Clinical Research Professor. H.C. is supported by the Danish Research Council. We dedicate this paper to the memory of Edwin W Hiam. We thank H. Falet for many helpful discussions and suggestions and S. Ebb-

ing for help with the aggregation studies and P-selectin measurements.

Supporting Online Material
www.sciencemag.org/cgi/content/full/VOL/ISSUE/PAGE/DC1
Materials and Methods

Figs. S1 to S4
References

4 April 2003; accepted 4 August 2003

Article is 688 picas

CONFIDENTIAL
DO NOT DUPLICATE